

HCP 4Z20 (JAPAN)

Boom specifications

Max vertical reach	19.2m
Max horizontal reach	16.2m

General specifications

Delivery pipe size(ID)	125mm (5")
Rotation	370°
End hose length	4m
End hose size(ID)	125mm
Outrigger spread-front	4.5m
Outrigger spread-rear	2.65m

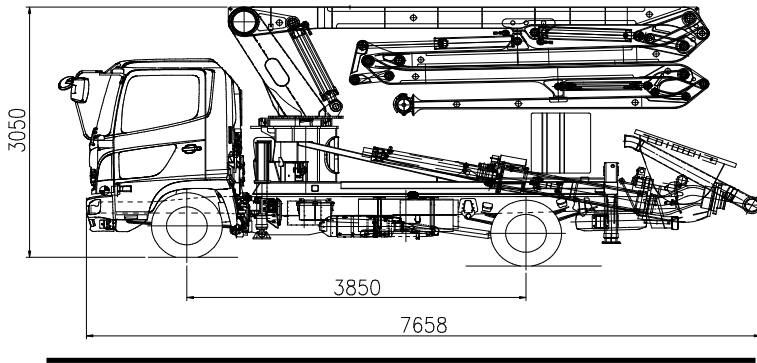
Pump specifications

Output	Rod side	71 m ³ /hr	92 m ³ /hr
	Piston side	47 m ³ /hr	62 m ³ /hr
Pressure	Rod side	71bar	53.8bar
	Piston side	106bar	80.1bar
Concrete cylinder size (ID)		200mm	230mm
Stroke length		1,100mm	1,100mm
Drive cylinder size(ID)		110mm	110mm
Rod size		63mm	63mm
No of Stroke/Min	Rod side	33	33
	Piston side	22	22
Hopper capacity		400L	
Volume control		Zero to full	
Hydraulic system		closed-loop	
Hydraulic system pressure		350bar	
S-valve		D200 x D180 (S2018)	D230 x D180 (S2318)
Main pump		A4VG125x1	
Water tank		300L	
Water pump pressure		20bar	

4Z20

SPECIFICATIONS

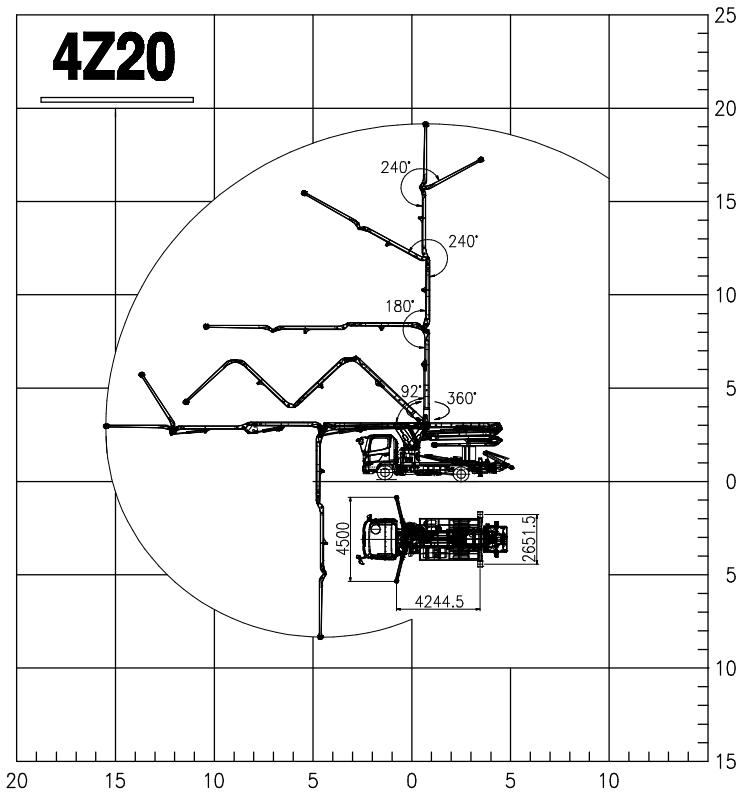
DIMENSIONS



BOOM

Boom type	4-section Z-Boom
Vertical reach	19.2m
Horizontal reach	16.2m
End hose length	4m
Delivery pipe diameter	125mm(5")
Slewing range	370°
1st section articulation	92°
2nd section articulation	180°
3rd section articulation	240°
4rd section articulation	240°
1st section length	5,200mm
2nd section length	3,800mm
3rd section length	3,800mm
4rd section length	3,400mm

WORKING RANGE



OUTRIGGER

Front Outrigger Type	One Stage Diagonal Extension Full Spread Width 4,500mm
Rear Outrigger Type	One Stage Swing-out Full Spread Width 2,650mm

PUMP SPECIFICATIONS

Maximum output	71 m ³ /h	92 m ³ /h
Concrete cylinder	Φ200×1100mm	Φ230×1100mm
Stroke per minute	33	33
Concrete pressure	71bar	54bar
Hopper Capacity	400Liter	400Liter
S-Valve	Φ200×Φ180	Φ230×Φ180
Main pump	A4VG125×1	A4VG125×1

※ " All specifications are subject to change without prior notice "